



MIPOLAM® TROPLAN PLUS

gerflor.com



Gerflor[®]
theflooringroup

MIPOLAM® TROPLAN PLUS

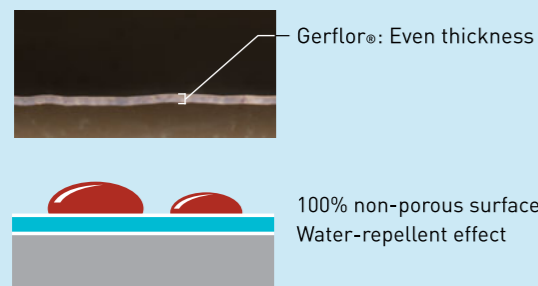


evercare™ SURFACE TREATMENT

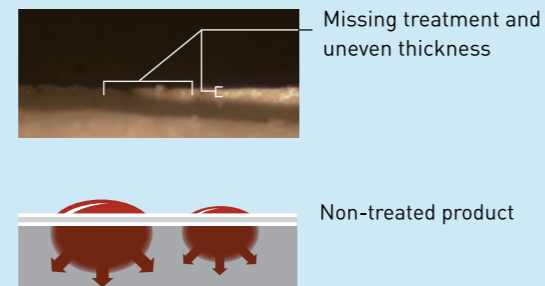
EXCLUSIVE PATENTED TECHNOLOGY BY GERFLOR®

THE BEST CHEMICAL STAIN RESISTANCE SURFACE TREATMENT

evercare™ BY GERFLOR : Treatment durability



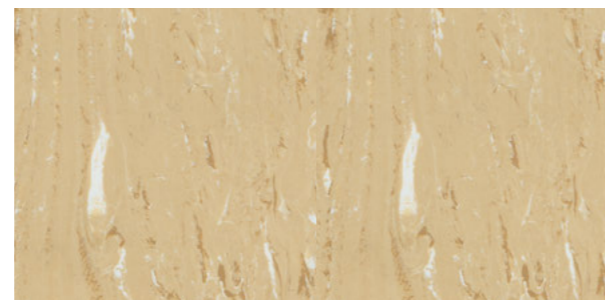
Other non-treated floor covering



SIMPLE & EASY STAIN REMOVAL



1003 Light Ocre



1035 Ocre



1032 Yellow

MIPOLAM® TROPLAN PLUS evercare™

Performances and benefits

- Available in 2 m sheet
- Matt finish surface: enhanced design & colour
- Flexible flooring, easy to install & weld
- Homogeneous vinyl flooring suitable for medium to heavy duty traffic areas
- Directional design available in 18 references

LOW VOC EMISSION, GOOD INDOOR AIR QUALITY



COMPOSITION

- 100% REACH compliant
- FREE of formaldehyde
- FREE of heavy metals
- FREE of solvent



WELLNESS

- Health**
 - Antibacterial activity (inhibits growth >99%)
- Safety**
 - Good slip resistance
- Comfort**
 - Walking comfort



RECYCLED CONTENT

- 25% recycled content
- 100% REACH compliant recycled content



RECYCLABILITY

- 100% recyclable product



INDOOR AIR QUALITY

- TVOC emissions 100 times lower than norm requirements (TVOC <math><10 \mu\text{g}/\text{m}^3</math> after 28 days)
- Floorscore certified
- Comply with AgBB protocol
- No formaldehyde emission



LCA

- Eco-designed according to a product specific Life Cycle Analysis
- Manufactured in an Iso 14001
- Contribution to many Green Building Schemes (LEED, HQE, BREEAM...)
- Patented surface treatment Evercare™ to reduce drastically the use of chemical products and water and ensure the lowest environmental impact

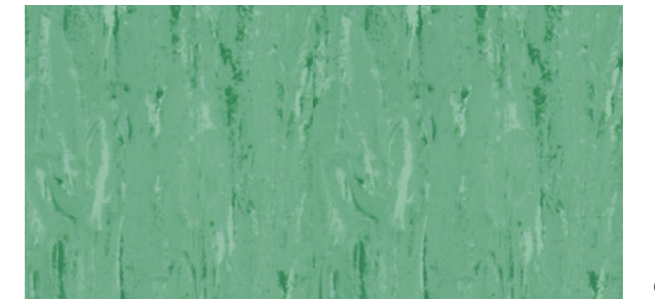
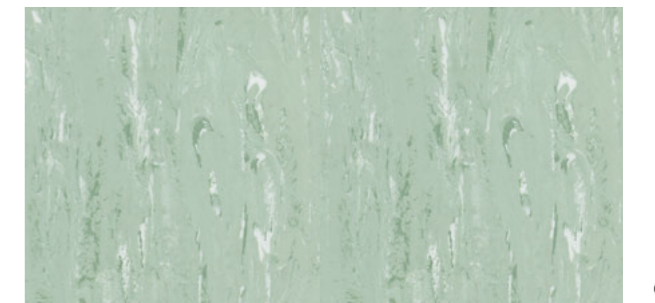
INSTALLATION

Installation should be carried out in accordance with local standards. Subfloor should be smooth, hard, clean and dry prior to laying. Where applicable, the subfloor must incorporate an effective Damp Proof Membrane. The material must be allowed to acclimatize 24 hours before installation in a room temperature of between 18-24°C. All seams must be hot welded using Gerflor® matching welding rod.

MAINTENANCE

No emulsion dressing is required. Maintenance should be carried out regularly to retain in the appearance and durability of the floor. The floorcovering should be maintained with regular sweeping and damp mopping using a neutral cleanser. More intense cleaning should be carried out using a fine spray cleaning pad under a floor machine, or for larger areas combined machine cleaning.

⚠ Rubber leaves indelible stains on vinyl flooring: do not use mats with rubber backing and replace tubular furniture feet with those made of PVC or polyamide.

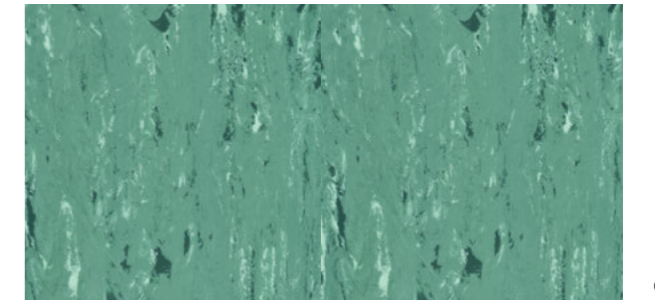
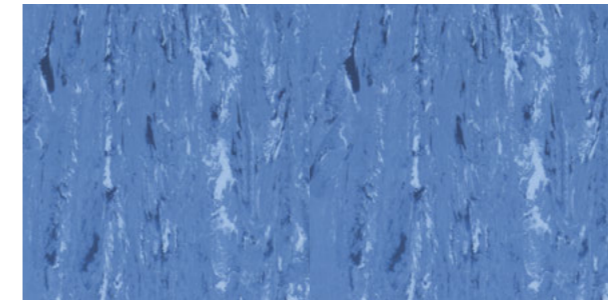


1002 Beige

1010 Grey

1006 Blue

1007 Green

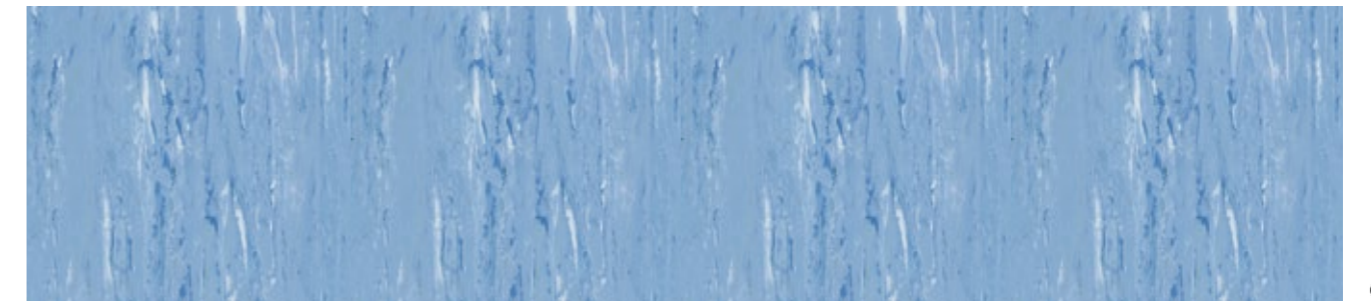


1004 Earth

1059 Blue Grey

1056 Dark Blue

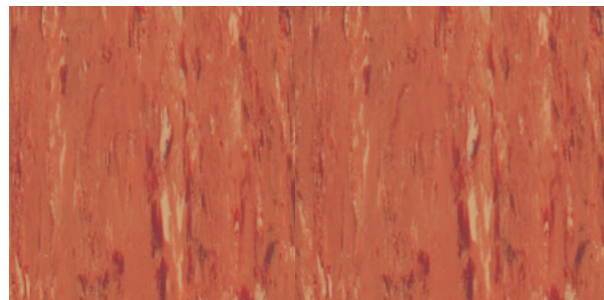
1037 Medium Green



1033 Brown

1040 Dark Grey

1036 Medium Blue



1055 Apricot

1060 Anthracite

MIPOLAM® TROPLAN PLUS is a vinyl flooring homogeneous calendared and pressed in 2m sheets, with a thickness of 2mm . The directional design with colour throughout the 2mm thickness.

This flooring is suitable for medium to high traffic areas, and facilitates floor-wall junctions, angles and welding treatments.

The flooring is equipped with Evercare™, patented surface treatment obtained by UV laser cross-linking offering the best chemical resistance to the main products used in health-care environment.

According to ISO 21702, Mipolam® Troplan Plus has anti-viral activity against Human Coronaviruses : it reduces the number of virus by 99,7% after 2h00.

TVOC emissions after 28 days (ISO 16000-6) are below detection levels with <10 µg / m³ and this product is classified A + (the best class). It's 100% recyclable.

MIPOLAM® TROPLAN PLUS

DESCRIPTION

Total thickness	ISO 24346 (EN 428)	mm	2
Weight	ISO 23997 (EN 430)	g/m²	3100
Width / Length of sheet	ISO 24341 (EN 426)	cm / lm	200 / 20

CLASSIFICATION

Norm / Product specification	-	-	ISO 10581(EN 649)
European classification	ISO 10874 (EN 685)	class	34 - 43
Fire rating	EN 13501-1	class	Bfl-s1
Static electrical propensity	EN 1815	KV	<2
Electrical resistance	EN 1081	Ω	10 ⁹ -10 ¹⁰
Slip resistance dry	EN 13893	-	≥0.3
Slip resistance wet	DIN 51130	class	R9

PERFORMANCES

Type binder content	ISO 10581	type	II
Dimensional stability	ISO 23999 (EN 434)	%	≤ 0.4
Castor chair test	ISO 4918 (EN 425)	-	OK
Thermal conductivity	ISO 10456 (EN 12524)	W/(m.K)	0.25
Colour fastness	ISO 105 - B02	degree	≥ 6
Chemical products resistance	ISO 26987 (EN 423)	class	OK
Surface treatment	-	-	EVERCARE™
Anti-bacterial activity (E. coli - S. aureus) ⁽¹⁾	ISO 22196	-	>99% Inhibits growth
Antiviral activity (human coronavirus 229E)	ISO 21702	-	99.7% after 2h
Color number	-	-	18

ENVIRONMENT / INDOOR AIR QUALITY

TVOC after 28 days	ISO 16000 - 6	µg/m³	< 10
Certification	-	-	Floorscore®

CE MARKING

CE	EN 14041	-	

Gerflor. Don't forget our complementary ranges!



WE CARE | WE ACT. Our Commitments for a Sustainable future



CARBON FOOTPRINT*

-20 % kg CO₂ equivalent/m² between 2020 and 2025



BIOSOURCED CONTENT***

10 % by 2025



RECYCLED CONTENT

30 % by 2025



ADHESIVE FREE**

35 % by 2025



ANNUAL VOLUME RECYCLED

60 000 t by 2025

* Scopes 1 and 2 defined in the GHG protocol *** % of activity with biosourced materials ** % of activity - adhesive free solution

Be connected!



#Gerflor



www.gerflor.com

Gerflor
the flooring group

GERFLOR ASIA Tel.: + 86-21-63578818